



Transition to Adulthood Program (TAP)

Participation Information

HAPPY
St. Patrick's
DAY



MARCH



SUN

MON

TUE

WED

THU

FRI

SAT

						1
2	3	4 YLN 4:45p-5:45p	5	6 Permit Group 5:00-6:00pm	7	8 YLN 12:00p-2:00p
9	10	11 YLN 4:45p-5:45p	12	13 Peer Social Group 430-630p	14	15
16	17 ST. PATRICK'S DAY	18 YLN 4:45p-5:45p	19	20 Permit Group 5:00-6:00pm	21	22
23	24	25 YLN 4:45p-5:45p	26	27 Permit Group 5:00-6:00pm	28	29
30	31					

Easterseals Youth Leadership Network
(YLN)

In-Person Saturday March 8th
&

Weekly, Tuesday's 4:45pm-5:45pm

<https://us02web.zoom.us/j/248116226>

to Join email Patrick Remy
<PRemy@EASTERSEALSMA.org>

Permit Group
(virtual)

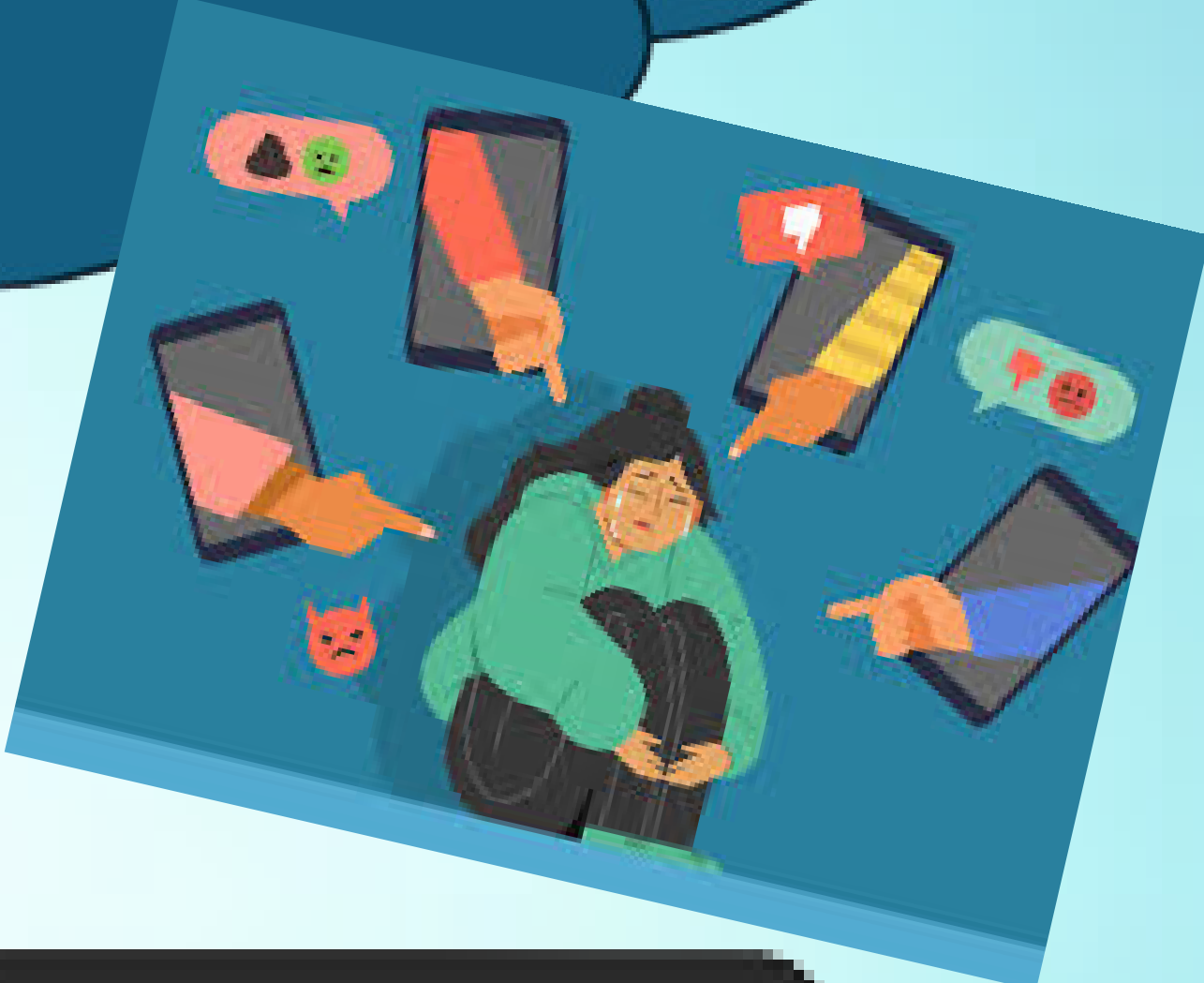
Thursday's 5:00-6:00pm
Sign up/email for link
rknipe@centerlw.org

"Social Media Footprint"
Peer Social Group
Thursday, March 13th
430-630p





Cyberbullying includes sending, posting, or sharing negative, harmful, false, or mean content about someone else.



DIGITAL FOOTPRINTS

What do yours say?

BE CAREFUL ABOUT:

- What you share.
- Where you share.
- With whom you share.

BE SMART ABOUT:

- Sites you visit.
- Emails you open.
- Unks you click.

BE YOURSELF
but be your best self.

A large blue footprint graphic with lines extending from it to various social media icons such as Twitter, Instagram, Facebook, and YouTube, illustrating the concept of a digital footprint.

Social media footprint
Social media trouble
Has anyone been blocked?
Needed to block social media?
Have you ever been Bullied?

A graphic representing a laptop screen. On the screen, there are icons for Facebook, Instagram, and WhatsApp at the top left. Below them is the text: "Social media footprint", "Social media trouble", "Has anyone been blocked?", "Needed to block social media?", and "Have you ever been Bullied?". At the bottom right of the screen are icons for Snapchat and TikTok.

Thursday, March 13th
4:30-6:30pm
Kindly RSVP by 3/7

Rknipe@centerlw.org/Jmanning@centerlw.org/
Msabr@centerlw.org
18 Chestnut St. Suite 540 Worcester, MA